

**TÜRKİYE**  
**MINISTRY OF FAMILY AND SOCIAL SERVICES**



**COMCEC**

***SOCIAL ASSISTANCE INTERVENTIONS in  
EMERGENCY AND DISASTER CASES***

***Directorate General of Social Assistance***

***İsmail SAVURAN***

***Family and Social Services Assistant Specialist***

***23rd Meeting of The COMCEC PAWG - September 2024 - ANKARA***



# Social Protection in Türkiye



Social Insurance Programs



Social Assistance Programs



Social Work Programs



Employment Programs



# CATEGORICAL SOCIAL ASSISTANCE PROGRAMS

- ***FAMILY ASSISTANCE***
- ***DISABILITY/OLD AGE ASSISTANCE***
- ***HEALTH ASSISTANCE***
- ***SHELTERING/FOOD ASSISTANCE***
- ***EDUCATION ASSISTANCE***
- ***PROJECT SUPPORTS***





# ALL SOCIAL ASSISTANCE PROGRAMS

## FAMILY ASSISTANCE

### Birth Assistance

Multiple Birth Assistance

Regular Cash Assistance for Women Whose Husbands are Dead

Regular Cash Assistance to the Families of Soldiers in Need

Assistance to Children of Soldiers in Need

Assistance to Orphans

Compensation for Damages Occuring due to Terror

Disaster and Emergency Assistance

Assistance for Job Guidance-Start of Employment Assistance

Assistance to War Veterans and Relative of Martyrs

Death Assistance

Türkiye Family Support Program

## EDUCATION ASSISTANCE

Ücretsiz Ders Kitabı

Şartlı Eğitim Yardımı

Yabancılara Yönelik Şartlı Eğitim Yardımı

Engelli Öğrencilerin Ücretsiz Taşınması

Eğitim Materyali Yardımı

Öğrenci Barınma-Taşıma-Yemek Yardımı

Yurt Yapımı

Eğitim Yardımları Kapsamında Ulaşım Giderlerine Yönelik Yardımlar

Kur-an Kursu Desteği

## HEALTH ASSISTANCE

Universal Health Insurance Premium Payments

Conditional Health Assistance

Co-payments

Chronic Illness Benefit

Payments to Silicosis Patients

Electricity Consumption Support for Chronic Patients

Health Assistance

Uninterrupted Power Supply Assistance and Accumulated Electricity Debt Assistance for Chronic Patients

Assistance Program for Saccharimeter Device for Insulin Therapy for People Daignosed with Type-1 Diabetes

## SHELTERING/FOOD ASSISTANCE

Food Assistances

Lunch Support

Soup Kitchens

Sheltering Assistance

Social Housing Project

Fuel Allowance

Electricity Consumption Support

Natural Gas Consumption Support

House Support Program for Women Whose Husbands are Dead

Social Cohesion Assistance (SUY)

Complementary Social Cohesion Assistance

House Support Program for Roma Citizens

## DISABILITY/OLD AGE ASSISTANCE

Old Age Pension

Disability Allowance

Allotwances for Relative of he Persons with Disabilities

Allotwances for Relative of he Persons with Disabilities

National Vefa Program

## PROJECT SUPPORTS

Family Support Center (ADEM) Projects

Social Solidarity Center (SODAM) Projects

Social Service Projects

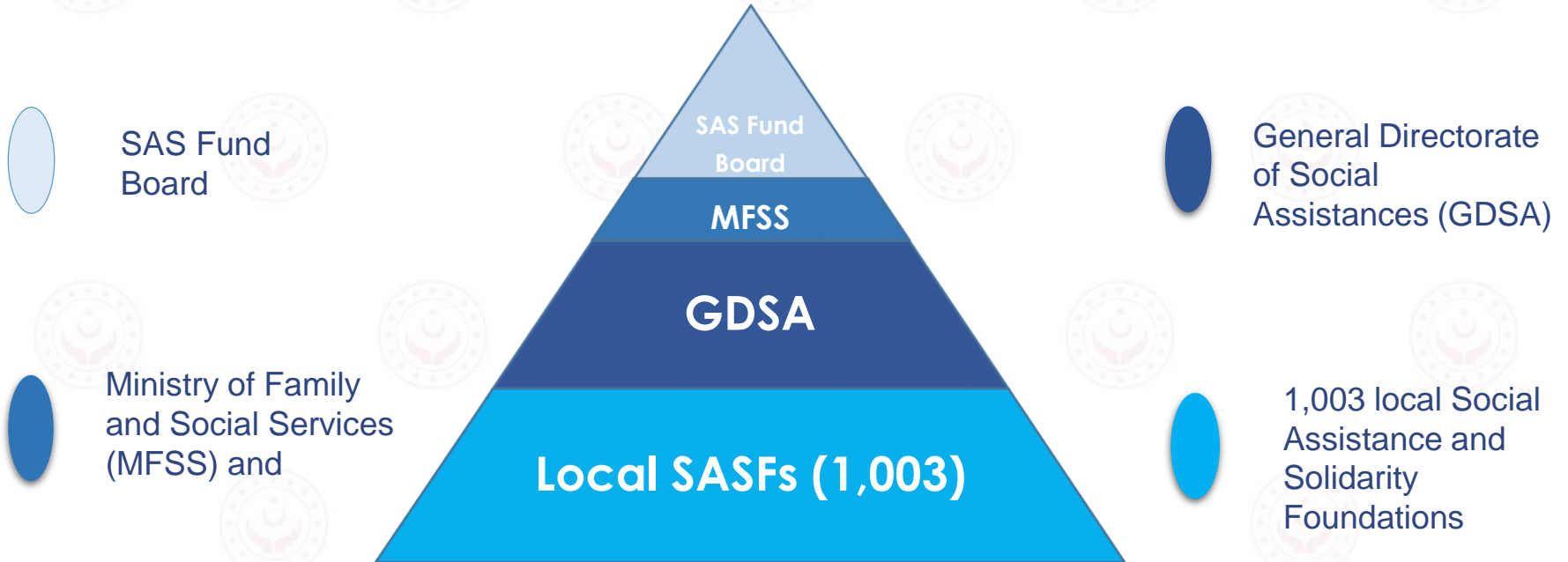
Accomodation Project for the Homeless

Social Support for Youth Having Left the Institution

- Assistances Carried out with the General Budget Resources
- Assistances Carried Out with the SAS fund Resources
- Assistances Carried Out by EU Financing



# Structure of the General Directorate of Social Assistance







# ASYA

(Disaster, Emergency Social Assistance)

Logistics Warehouses

Vehicles and  
equipment

Trainings



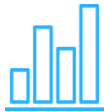


# BASIC INDICATORS



**%98**

The Rate of Cash Assistances to All Social Assistance



**%21,6**

The Rate of Assistances for **the Elderly and Person with Disabilities** to All Social Assistances



**%28,5**

The rate of **Family Assistances** to All Social Assistances



**%74**

The rate of **Married** Social Assistance Beneficiaries



**%60**

The Rate of **Female** Social Assistance Beneficiaries to All Regular Social Assistance Beneficiaries





# CONCEPT OF DISASTER AND EMERGENCY

## STATE OF DISASTER

Events that occur unexpectedly and cannot be prevented by people, stopping or interrupting daily life

## STATE OF EMERGENCY

Events that can be overcome without asking for help (Narrow sense)

An event that is expected to cause substantial damage and deterioration (Broadly defined)







# NATURAL AND HUMAN-CAUSED DISASTERS AND EMERGENCIES



## NATURAL

- Earthquake, Landslide;
- Fire;
- Flood, Drought;
- Storm, Tornado;



## HUMAN-CAUSED

- Nuclear, Biological and Chemical Accidents;
- Transportation Accidents;
- Industrial Accidents;
- War
- Economic Crises





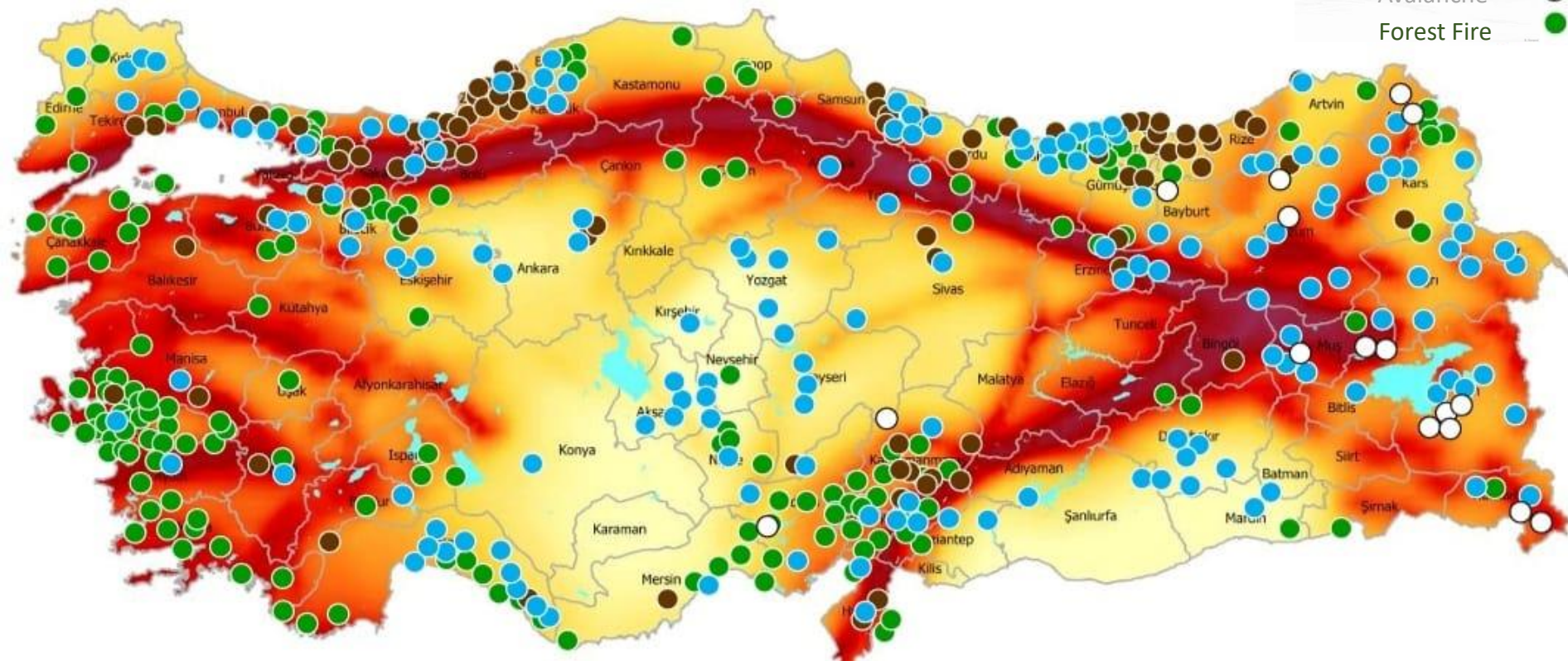
# TÜRKİYE DISASTER RISK MAP

Landslide

Flood

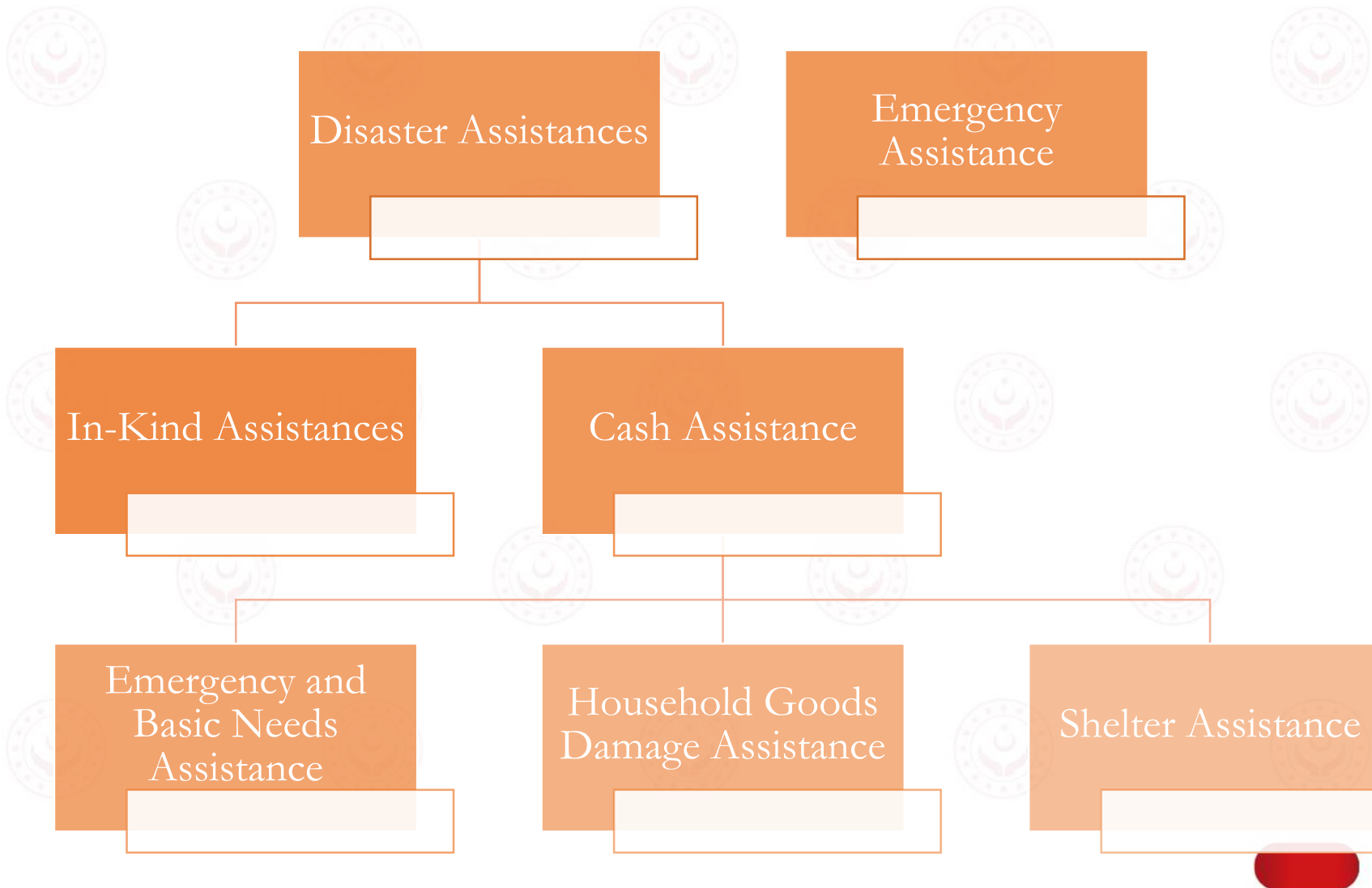
Avalanche

Forest Fire





# DEPARTMENT OF DISASTER, EMERGENCY AND COORDINATION







# DISASTER RESPONSE PLAN OF TÜRKİYE(TAMP)

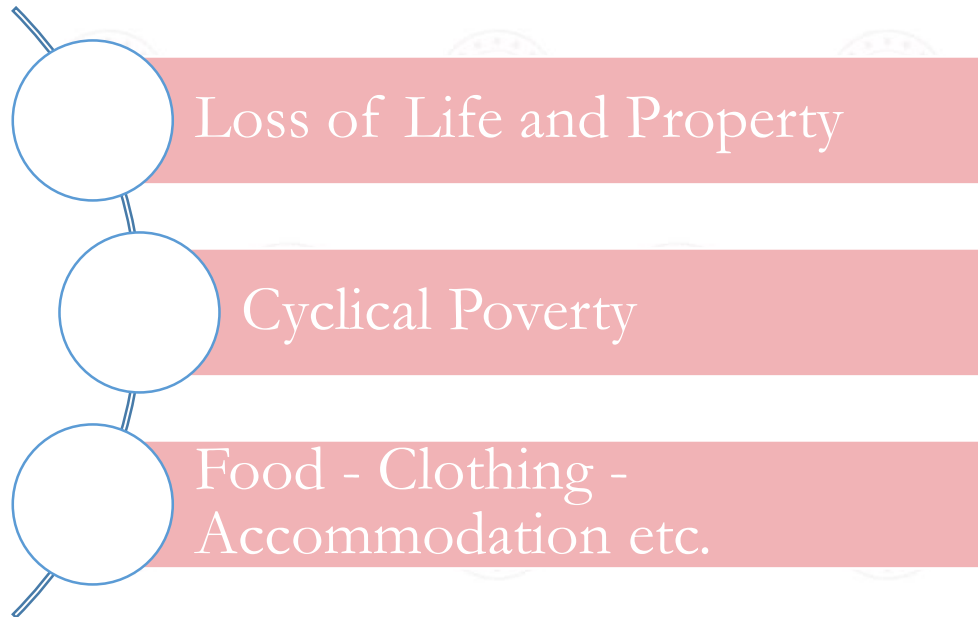
**Disaster Response Plan of Türkiye(TAMP);** was prepared to ensure effective response to disasters in line with the experiences gained from the disasters experienced in our country and entered into force after being published in the official gazette in 2014.

The purpose of TAMP is to define the roles and responsibilities of disaster groups and coordination units that will take part in response activities related to disasters and emergencies, and to **determine the basic principles of response planning before, during and after disasters.**





# DISASTERS AND SOCIAL ASSISTANCES





# Disaster Management

- Risk analysis,
- Regular Check,
- To inform control,

Prevention/  
Mitigation

- Studies on Risks,
- Needs Analysis,
- Storage

Preparation

Improvement

- Debris Removal,
- Repair and Construction,
- Social Assistance Phase 2,

Intervention

- First Response,
- Detection,
- Social Assistance Phase 1,





# 6 February Earthquakes

- On 6 February 2023, earthquakes of magnitude 7.7 and 7.6, and first day more than 4.000 aftershocks.
- Earthquakes affected 11 provinces (Kahramanmaraş, Hatay, Gaziantep, Adıyaman, Malatya, Kilis, Şanlıurfa, Adana, Osmaniye, Diyarbakır, Elazığ) where nearly 15 million people live.
- 50,783 people lost their lives and 107,204 people were injured.
- After the earthquake, there was an intense migration to other cities.






# Actions Taken Within the Scope of Shock Sensitive Social Protection After the February 6 Earthquakes



Ensuring the continuation of cash aid without interruption



Distribution of in-kind aid through warehouses and social markets



Assigning a Coordinator at the Head of Department level in 11 provinces



ASYA and Foundations teams are assigned to the field alternately



Providing additional funds of 1.3 billion TL to Foundations in provinces affected by the earthquake.



# Problems and Solutions After the Earthquake

Coordination problems

Difficulties experienced by personnel working in disasters

Difficulties in transportation and logistics services

Sending more products than needed

Sending second-hand products,

In some cases, ineffective distribution of assistance





# Coordination Center







# Warehouses

- Distribution over 200 million products.
- Total number of warehouses are 54.
- Total number of unloaded trucks are 31.643.







# Social Markets



- Number of Employees are 2.587.
- Total number of social markets are 202.







# Mobile Social Markets



- Number of mobile social markets are 14.







# Vehicles



- Total number of vehicles are 476.



**THANK YOU!..**



tcailesosyal

[www.aile.gov.tr](http://www.aile.gov.tr)