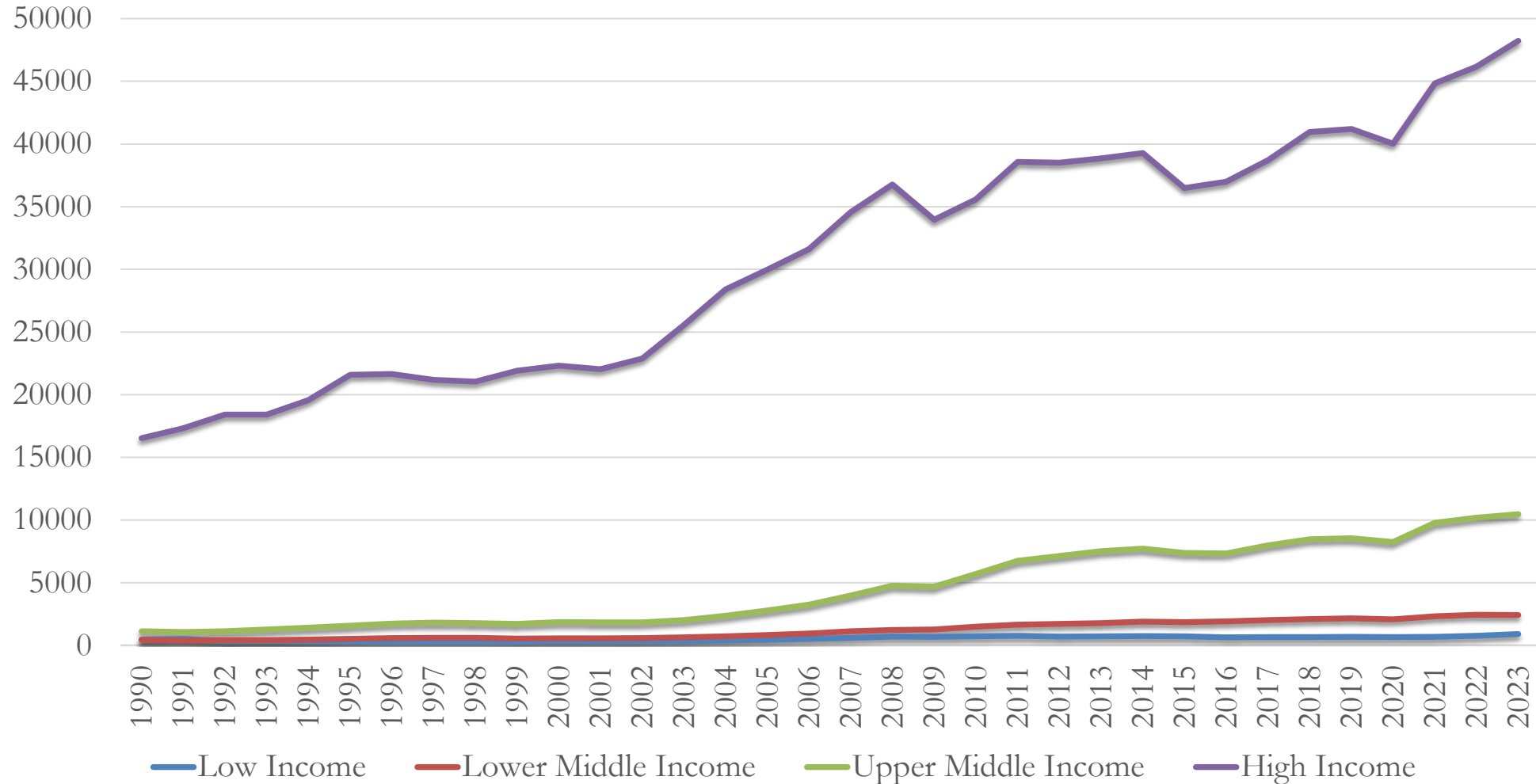


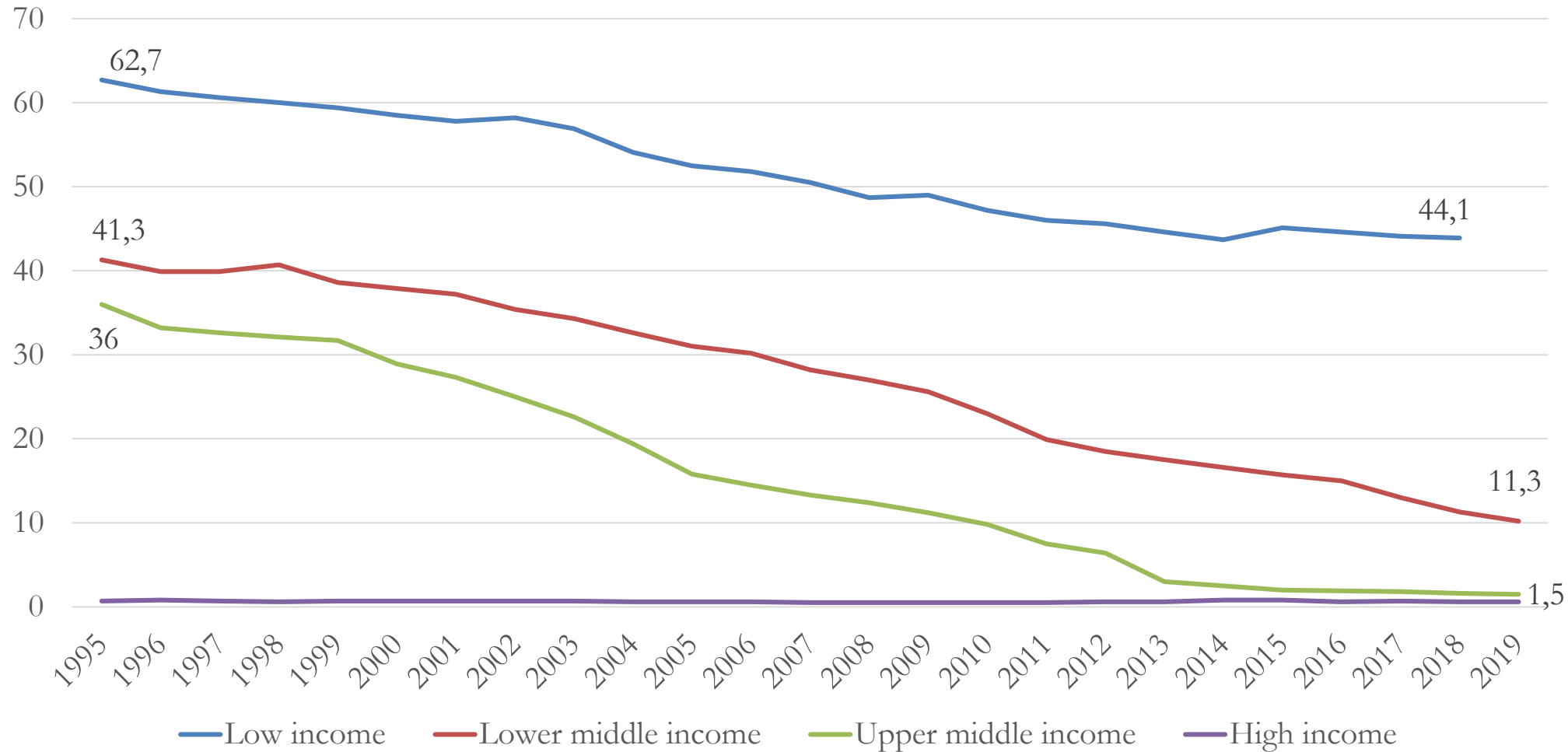


COMCEC POVERTY OUTLOOK 2024

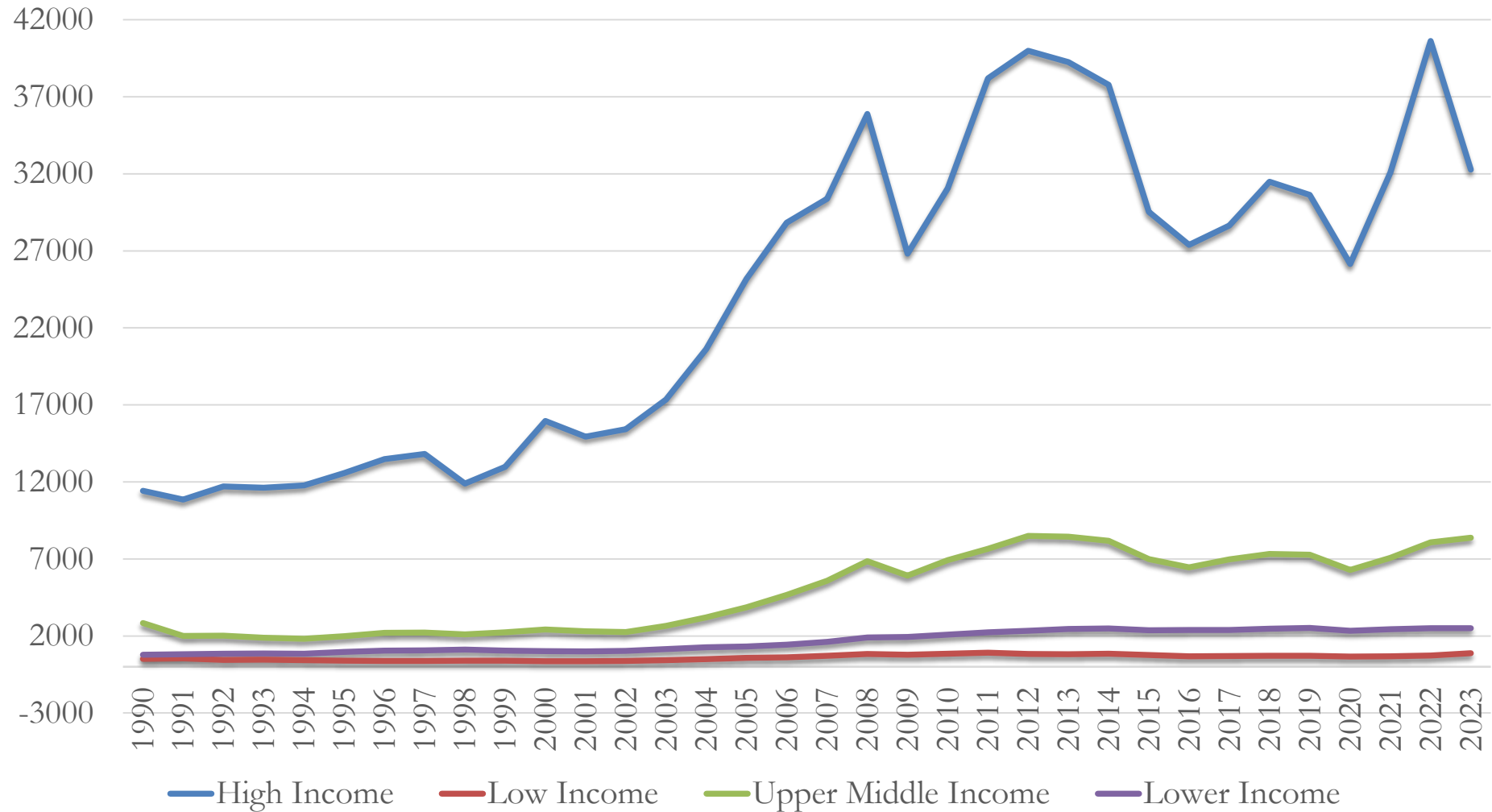
GDP Per Capita (PPP) (Curr. Int. \$) in the World



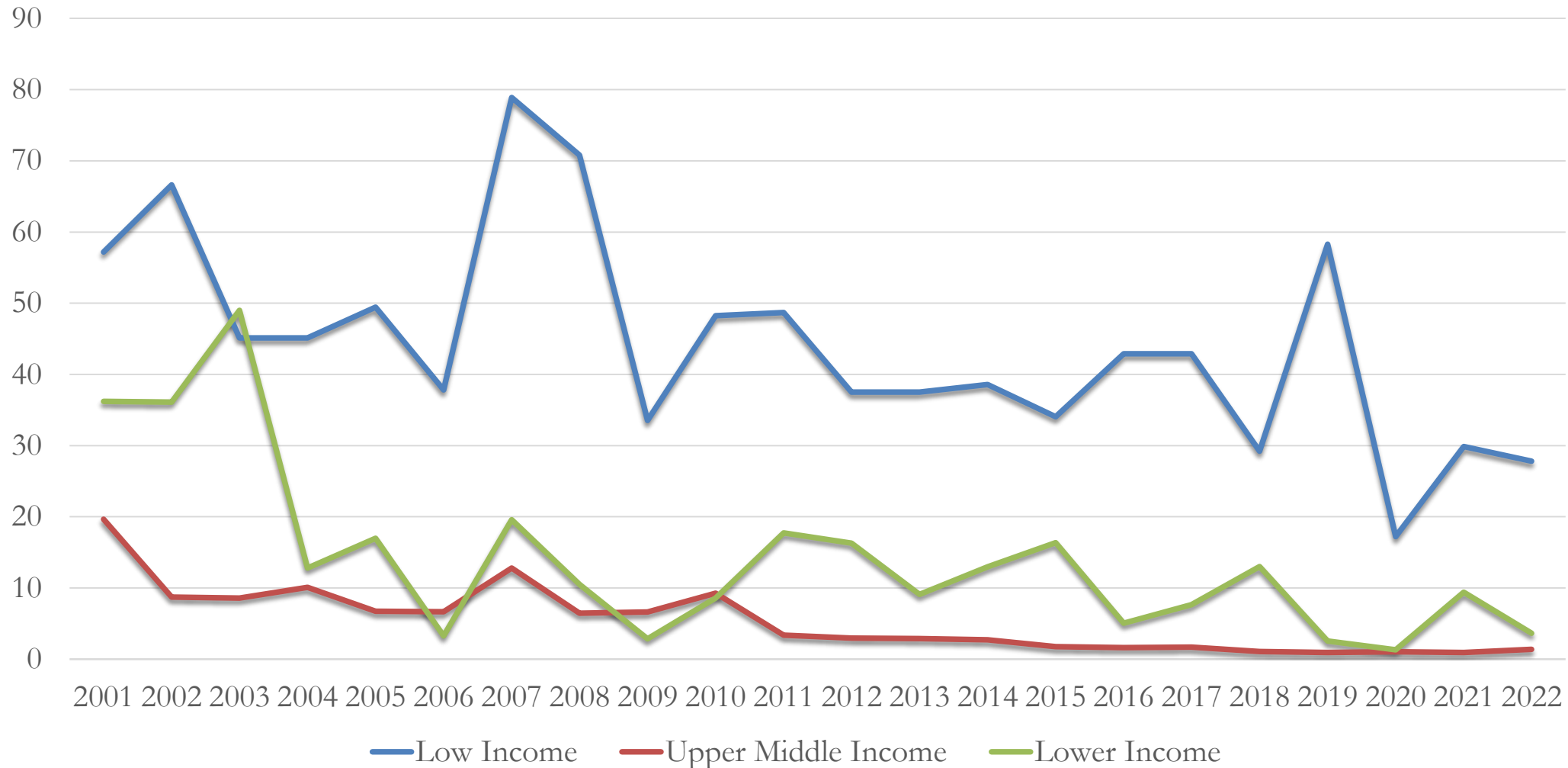
Poverty Headcount Ratio at US\$2.15 a day (PPP) (% of Population) --World



GDP Per Capita (PPP) (Curr. Int. \$) in the OIC

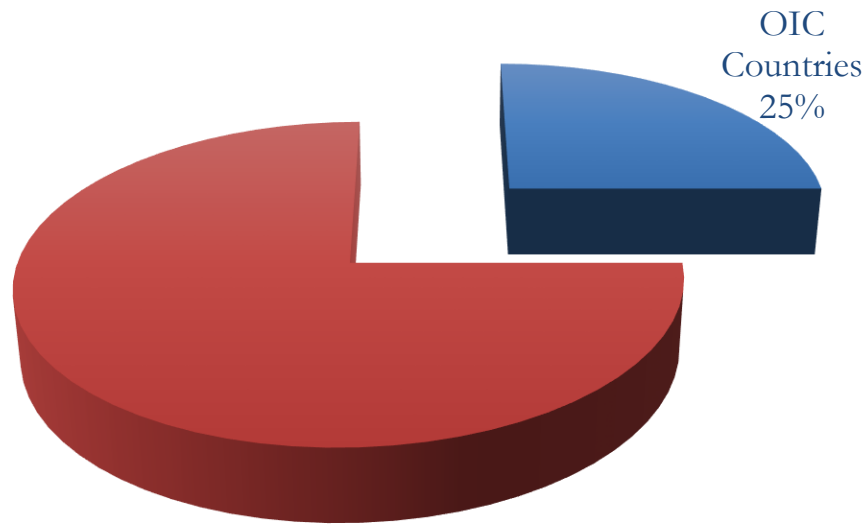


Poverty Headcount at US\$2.15 a day (PPP) (% of Population) in the OIC

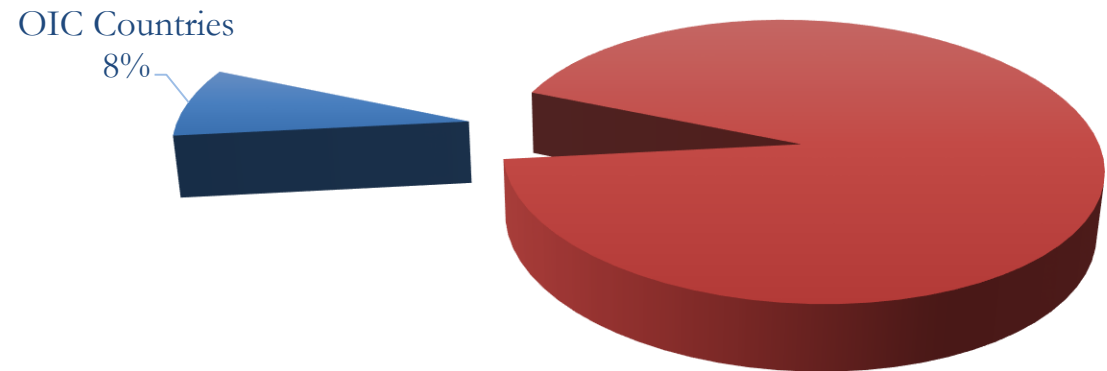


OIC Countries

World Population

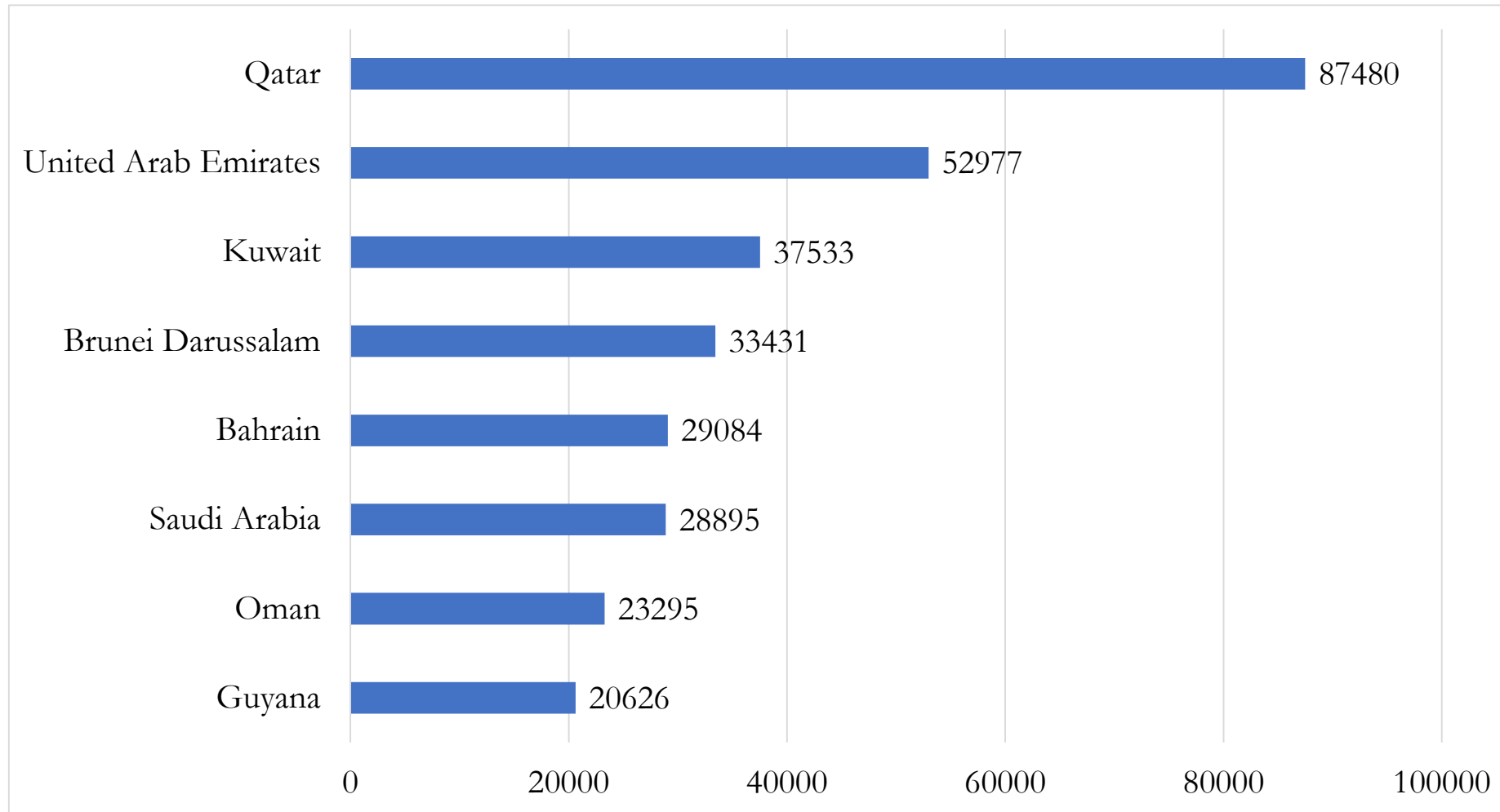


World GDP

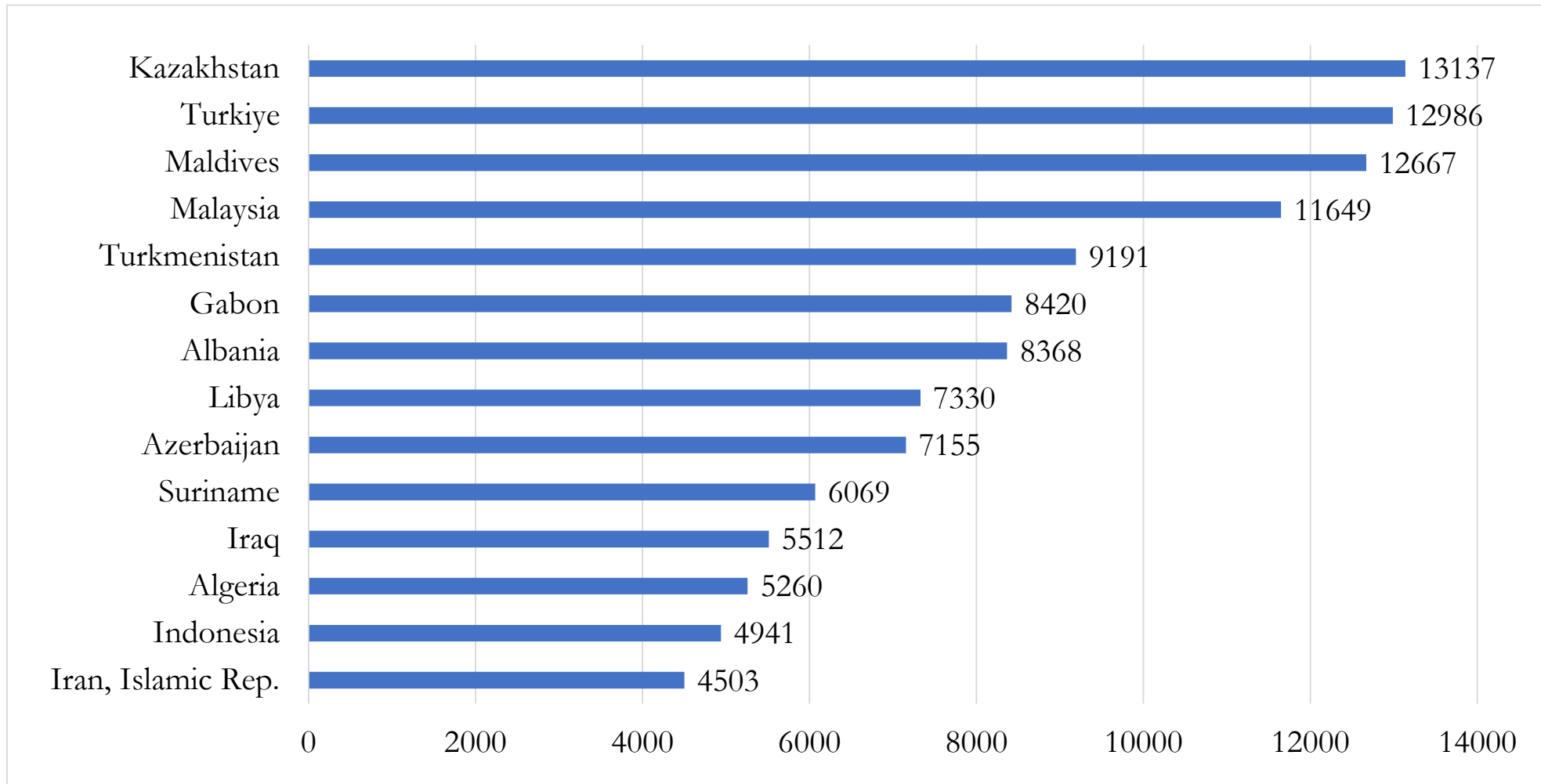


22 of 46 Least Developed Countries are OIC Members

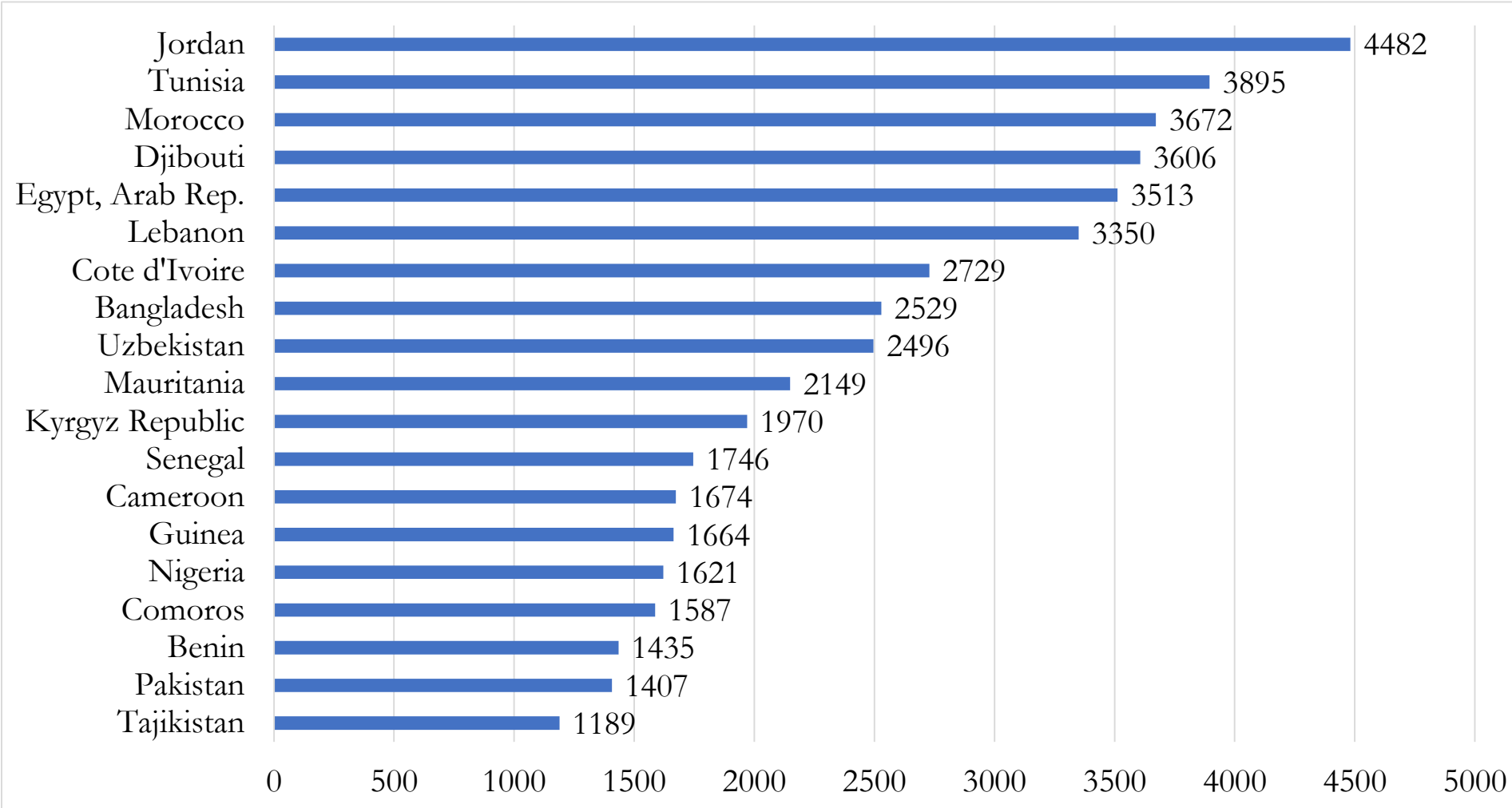
GDP Per Capita (PPP, Current Int. \$) in the OIC, 2023- High Income Countries



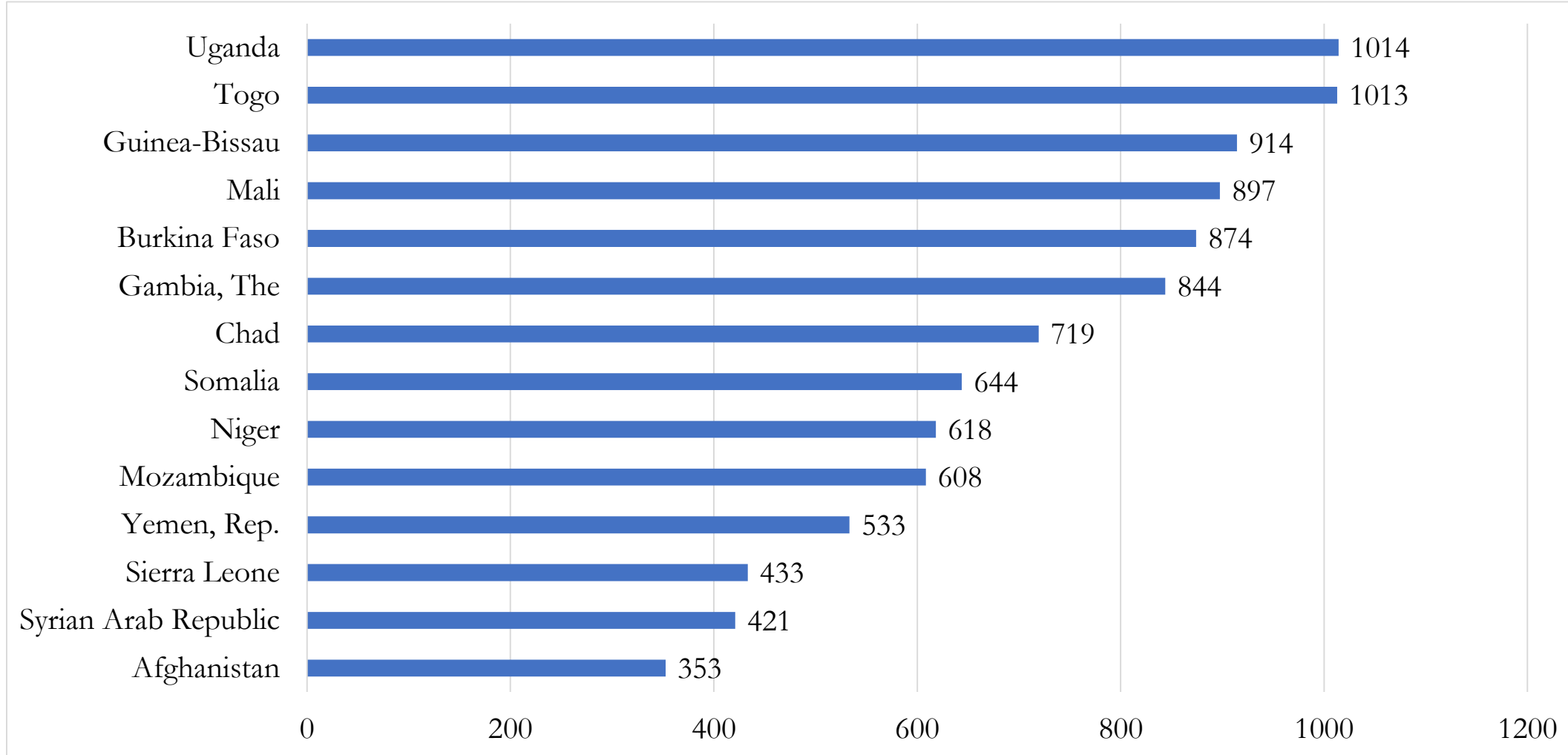
GDP Per Capita (PPP, Current Int. \$) in the OIC, 2023 – Upper Middle Income Countries



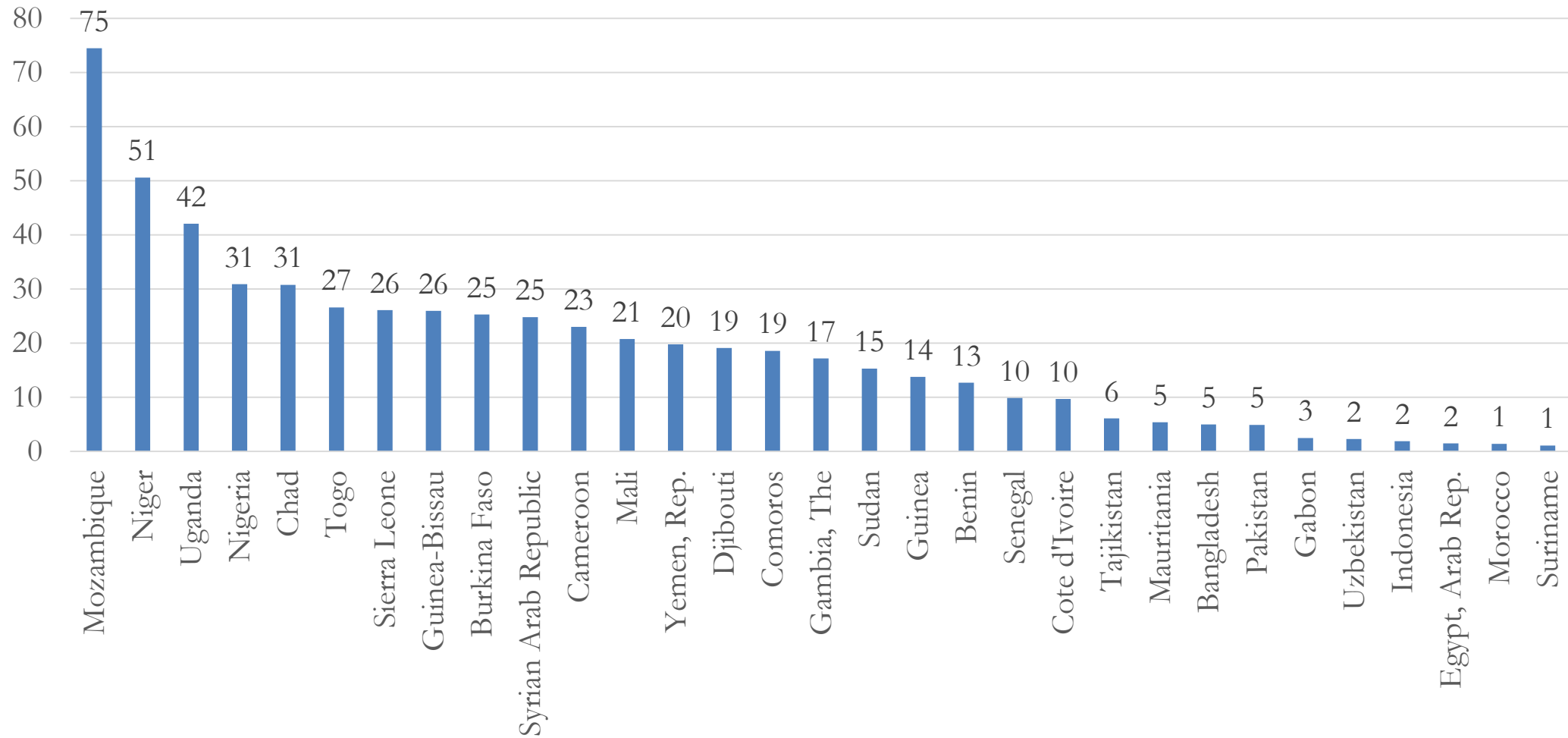
GDP Per Capita (PPP, Current Int. \$) in the OIC, 2023 – Lower Middle Income Countries



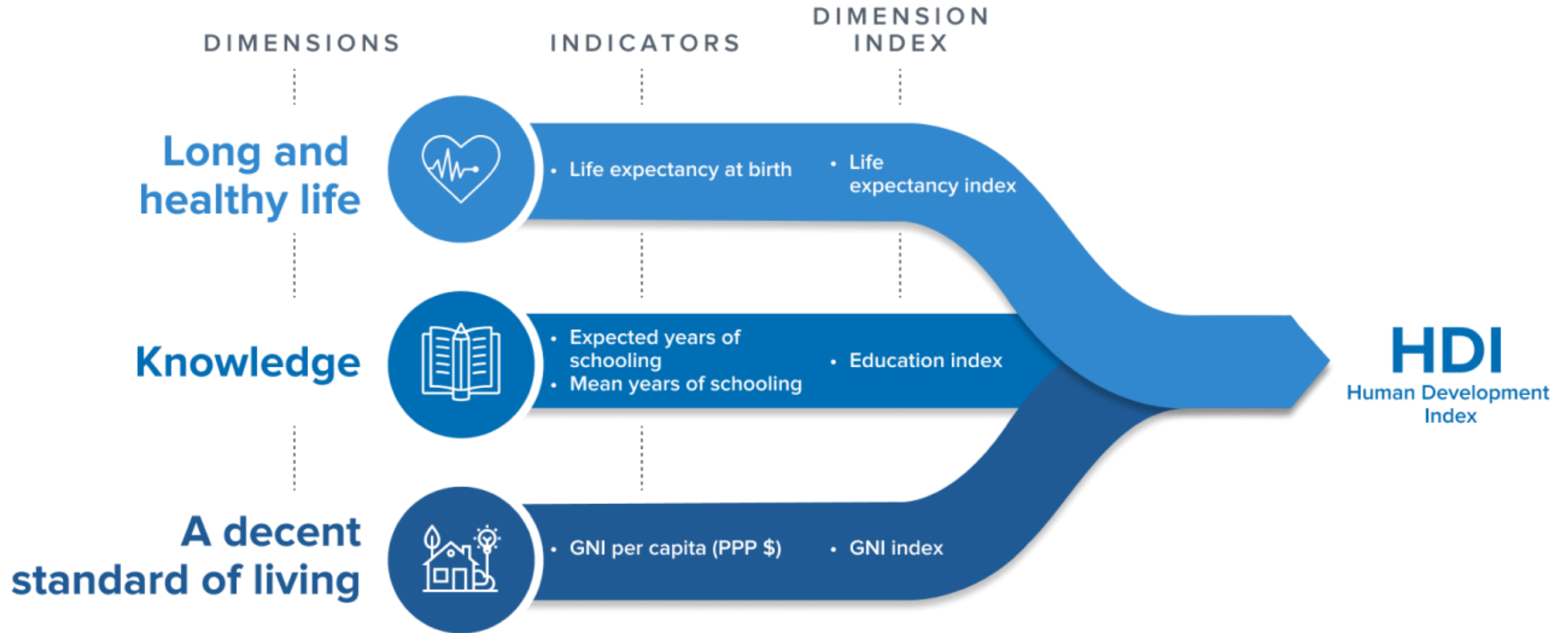
GDP Per Capita (PPP, Current Int. \$) in the OIC, 2023 – Low Income Countries



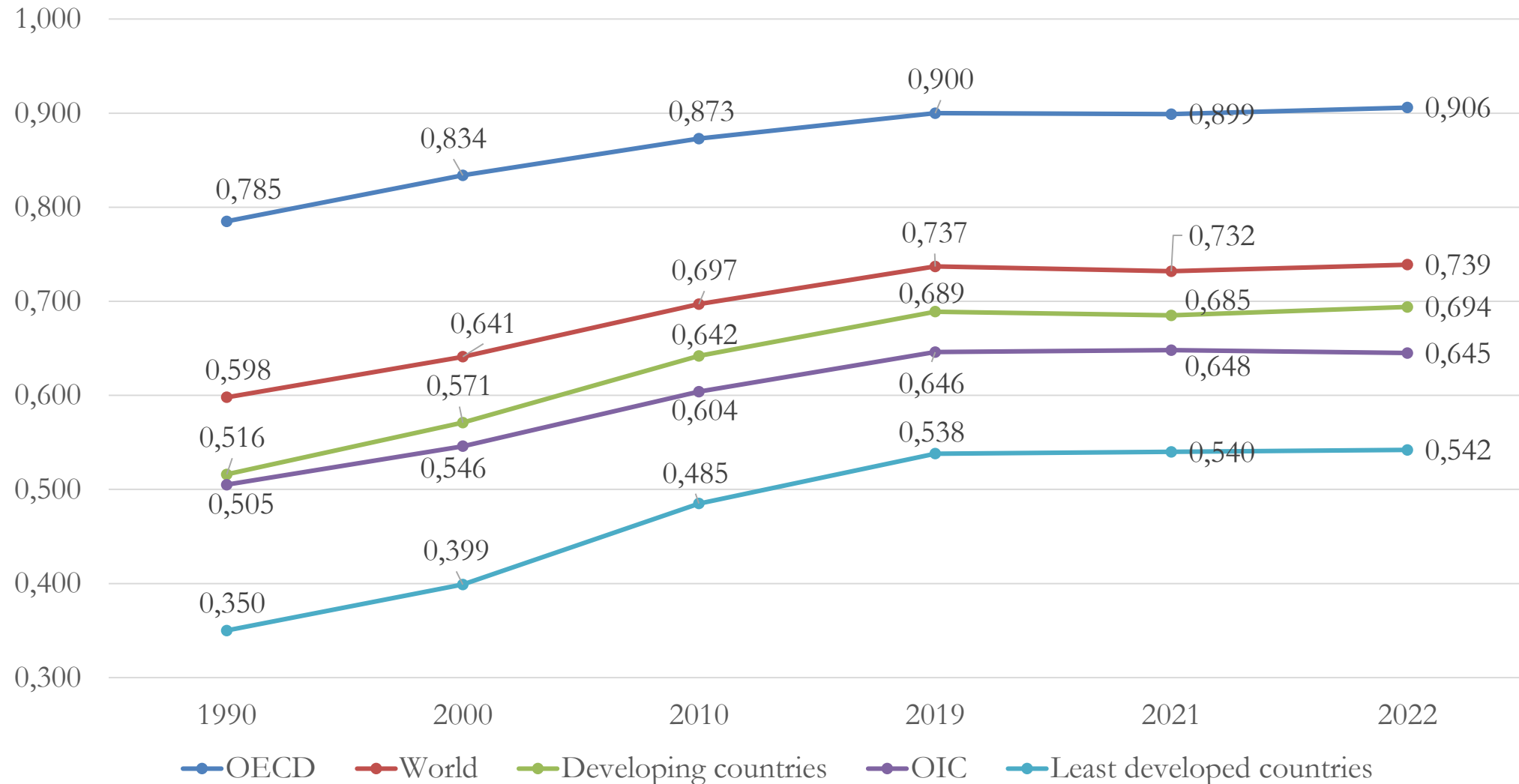
Poverty Headcount at US\$2.15 a day (PPP) (% of Population) in the OIC



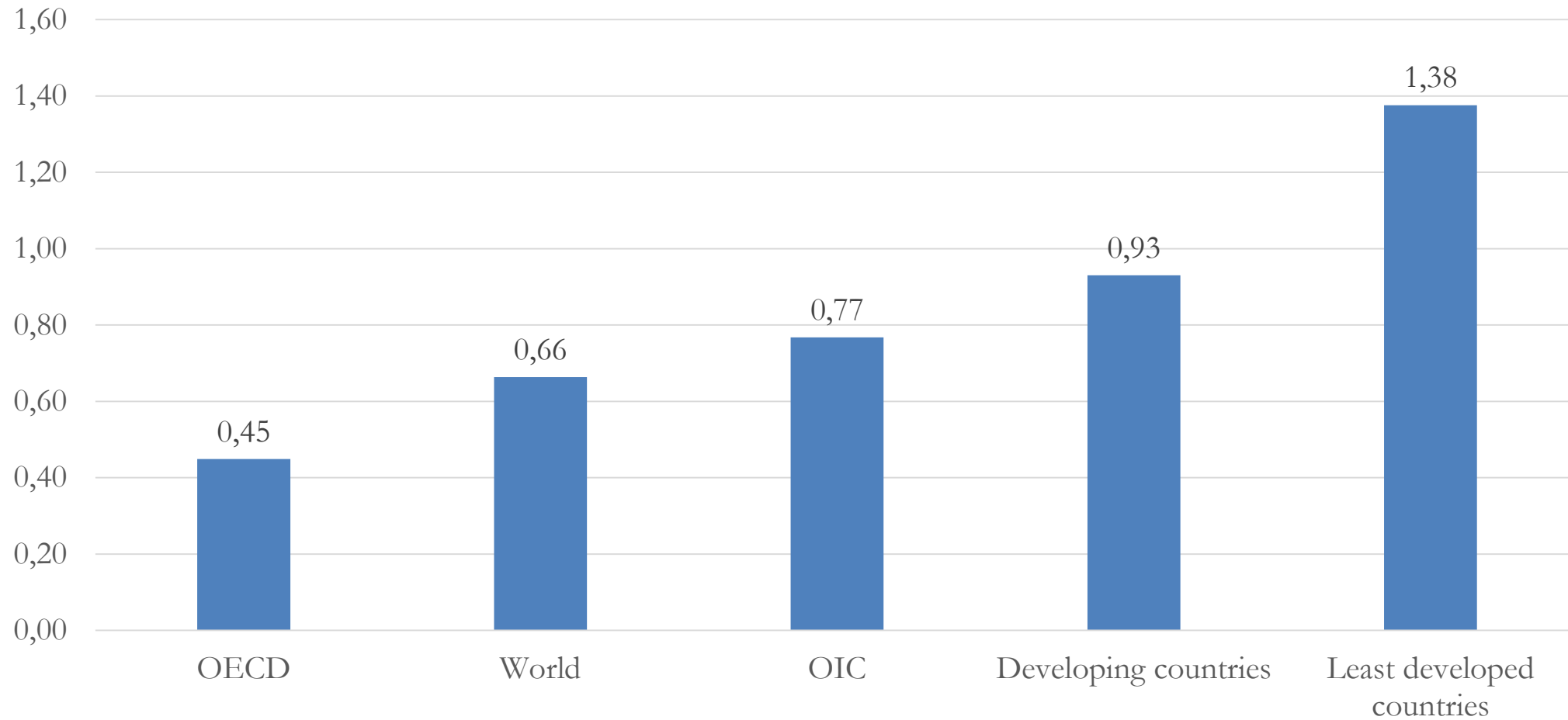
Human Development Index



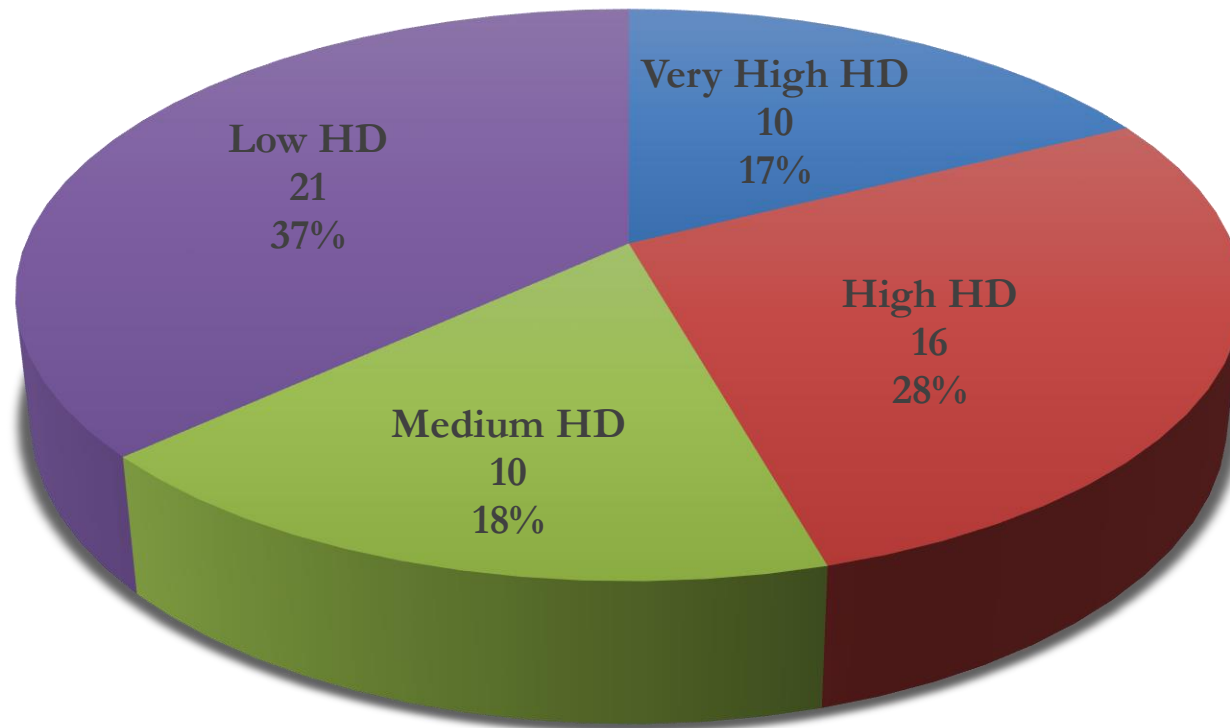
Trends in Human Development Index, 1990-2022



Annual growth rate in HDI between 1990 and 2022



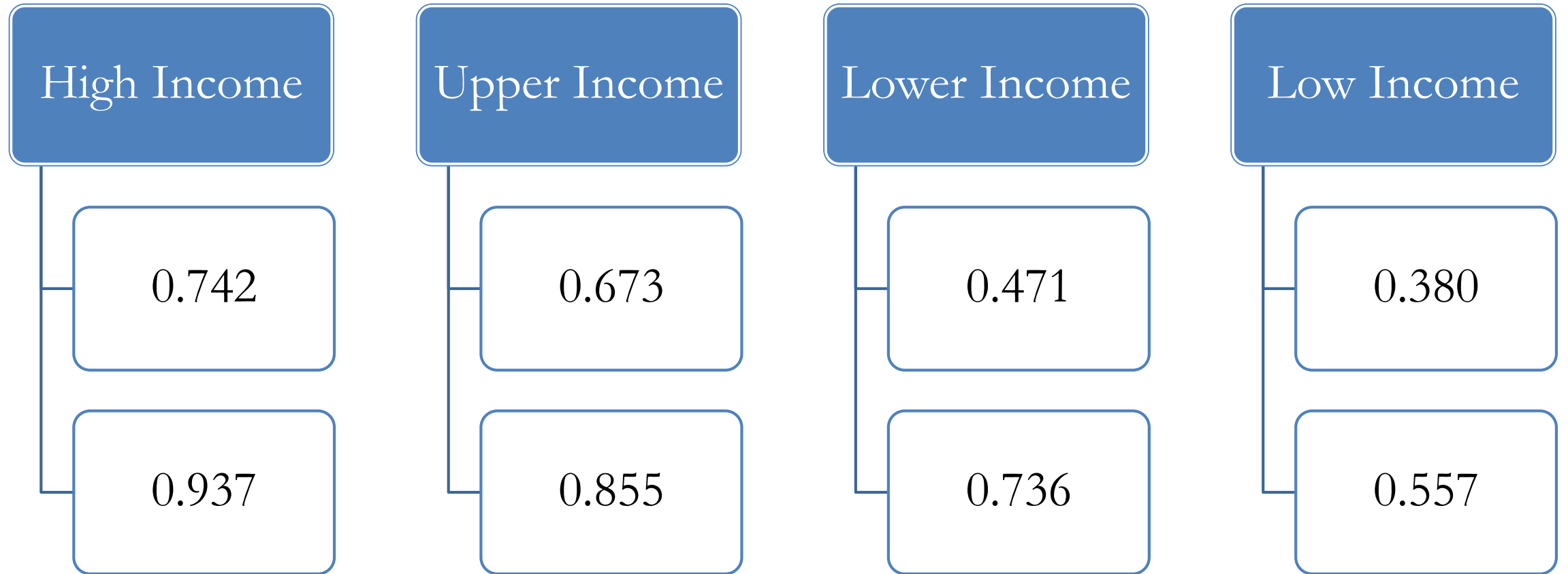
Human Development in OIC Member States



Income Levels vs Human Development

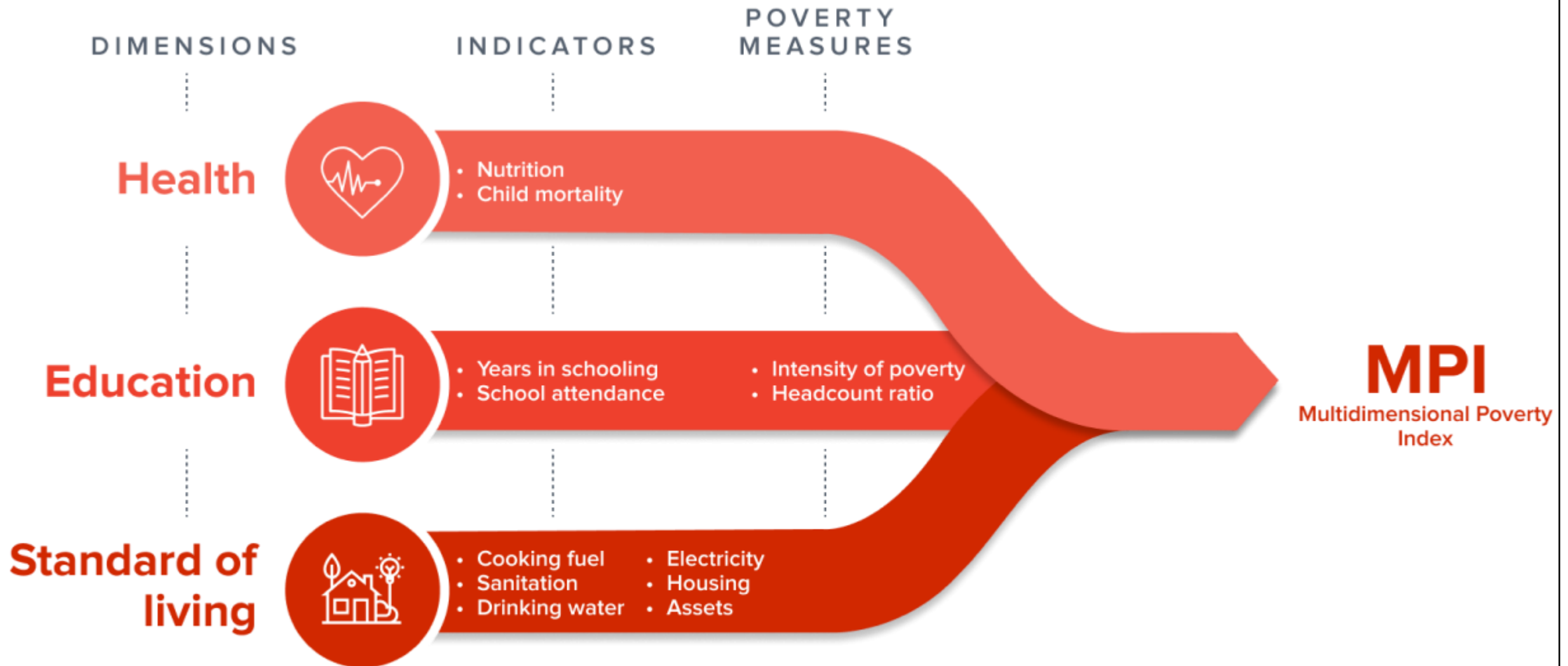
		Low income	Lower-middle income	Upper-middle income	High income	Total
Low human development	# of countries	13	8	0	0	21
	%	62%	38%	0%	0%	100%
Medium human development	# of countries	2	5	3	0	10
	%	20%	50%	30%	0%	100%
High human development	# of countries	0	7	8	1	16
	%	0%	44%	50%	6%	100%
Very high human development	# of countries	0	0	3	7	10
	%	0%	0%	30%	70%	100%

Human Development Index by Income Groups- OIC Members

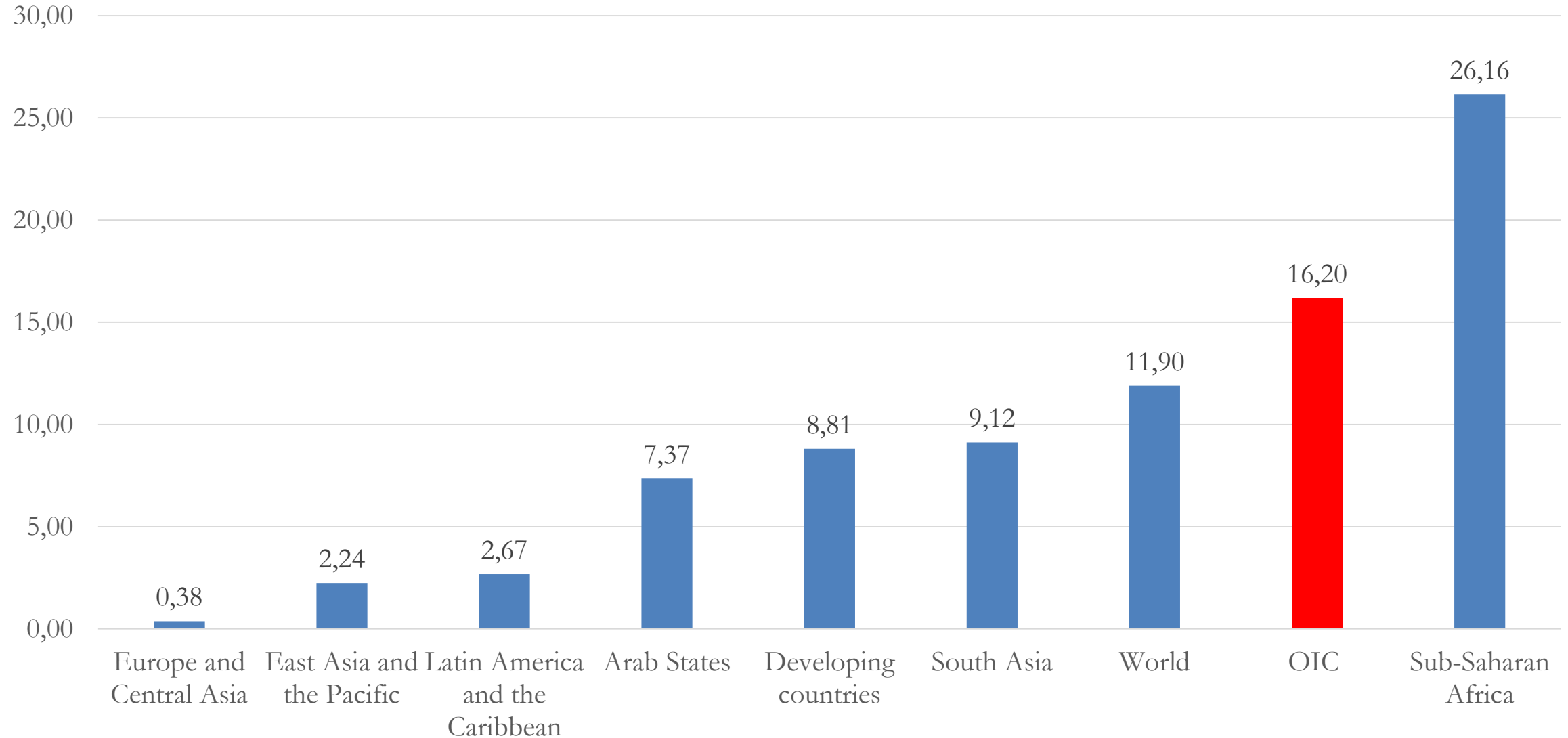


HDI: 0 (Low Development)- 1 (High Development)

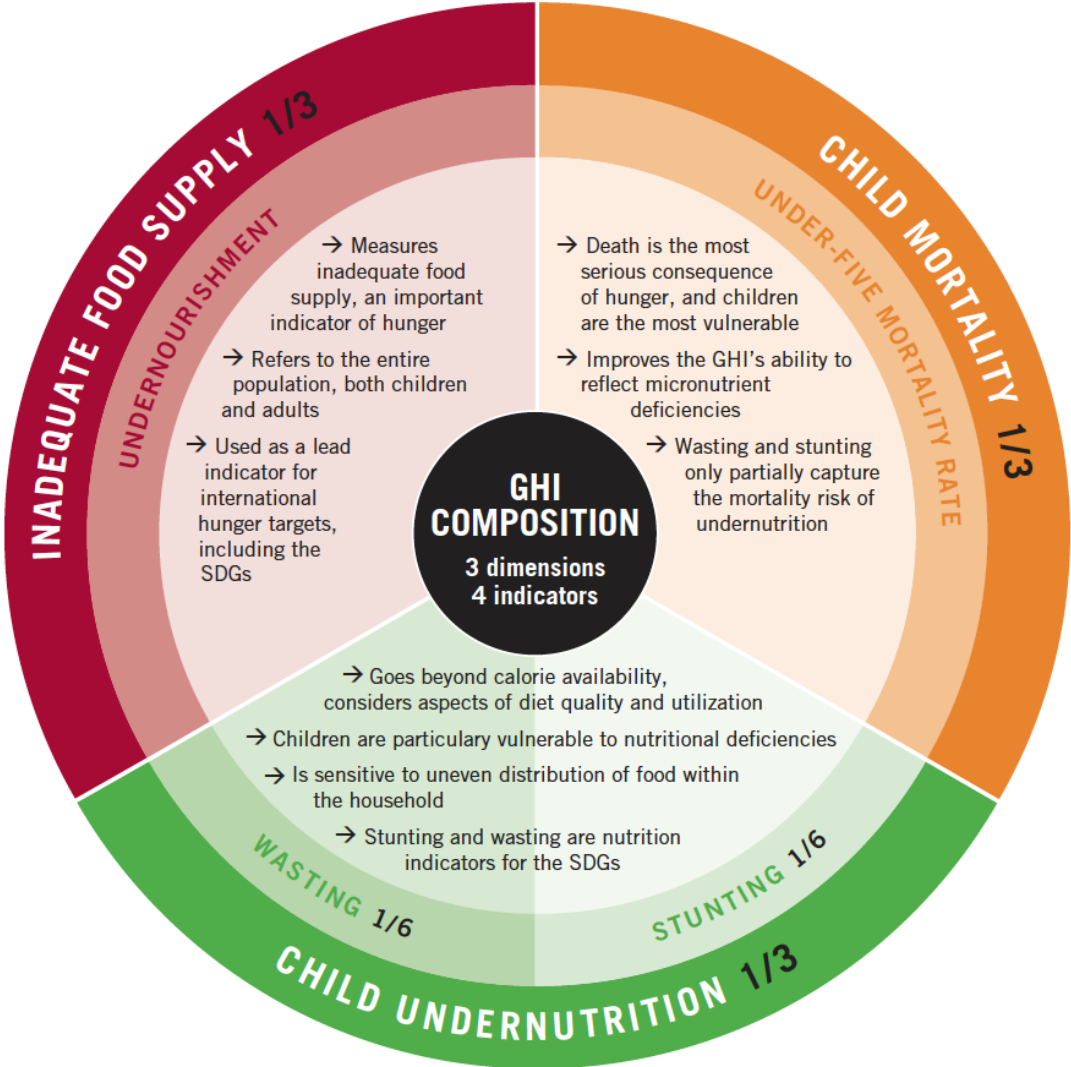
Multidimensional Poverty Index








Multidimensional Poverty by Region (% of population with multidimensional poverty)

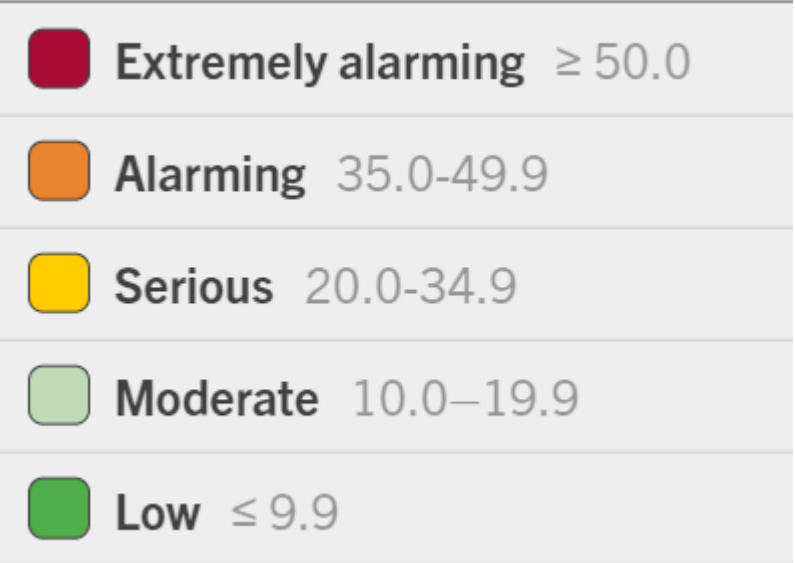
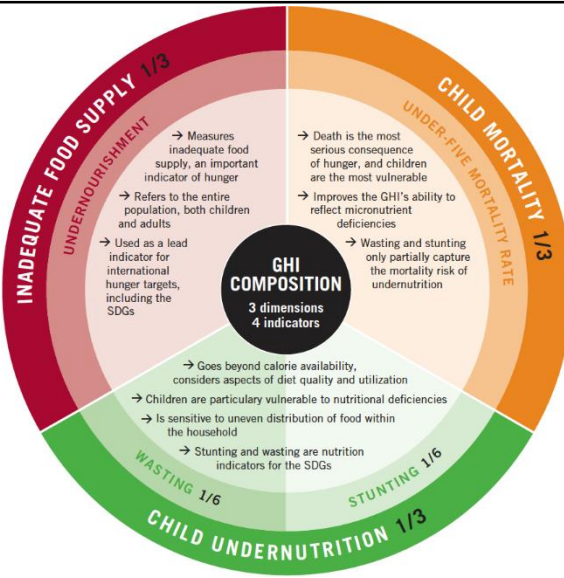
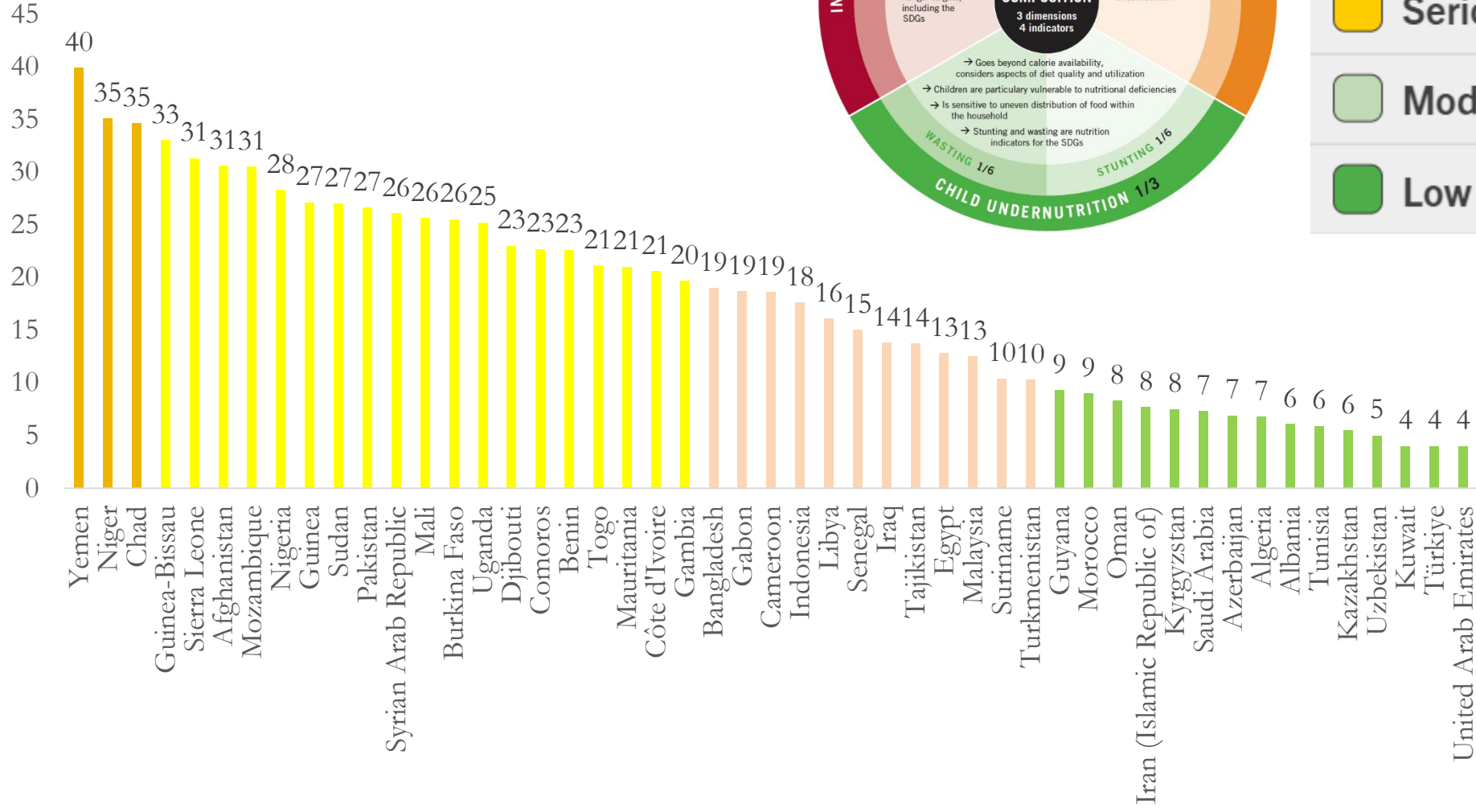


Global Hunger Index



	Extremely alarming ≥ 50.0
	Alarming 35.0-49.9
	Serious 20.0-34.9
	Moderate 10.0-19.9
	Low ≤ 9.9

Global Hunger Index



Global Gender Parity Index

DIMENSIONS

Life and good health

Education, skill-building and knowledge

Labour and financial inclusion

Participation in decisionmaking

INDICATORS

Fraction of life expectancy at birth spent in good health, female/male

Population with completed secondary education or higher, female/male
Youth not in education, employment or training, female/male

Labour force participation rate in households of couples with children, female/male
Financial account ownership, female/male

Share of seats held in parliament, female/male
Share of seats held in local government, female/male
Share of managerial positions held, female/male

DIMENSION INDEX

Life and good health index

Education, skill-building and knowledge index

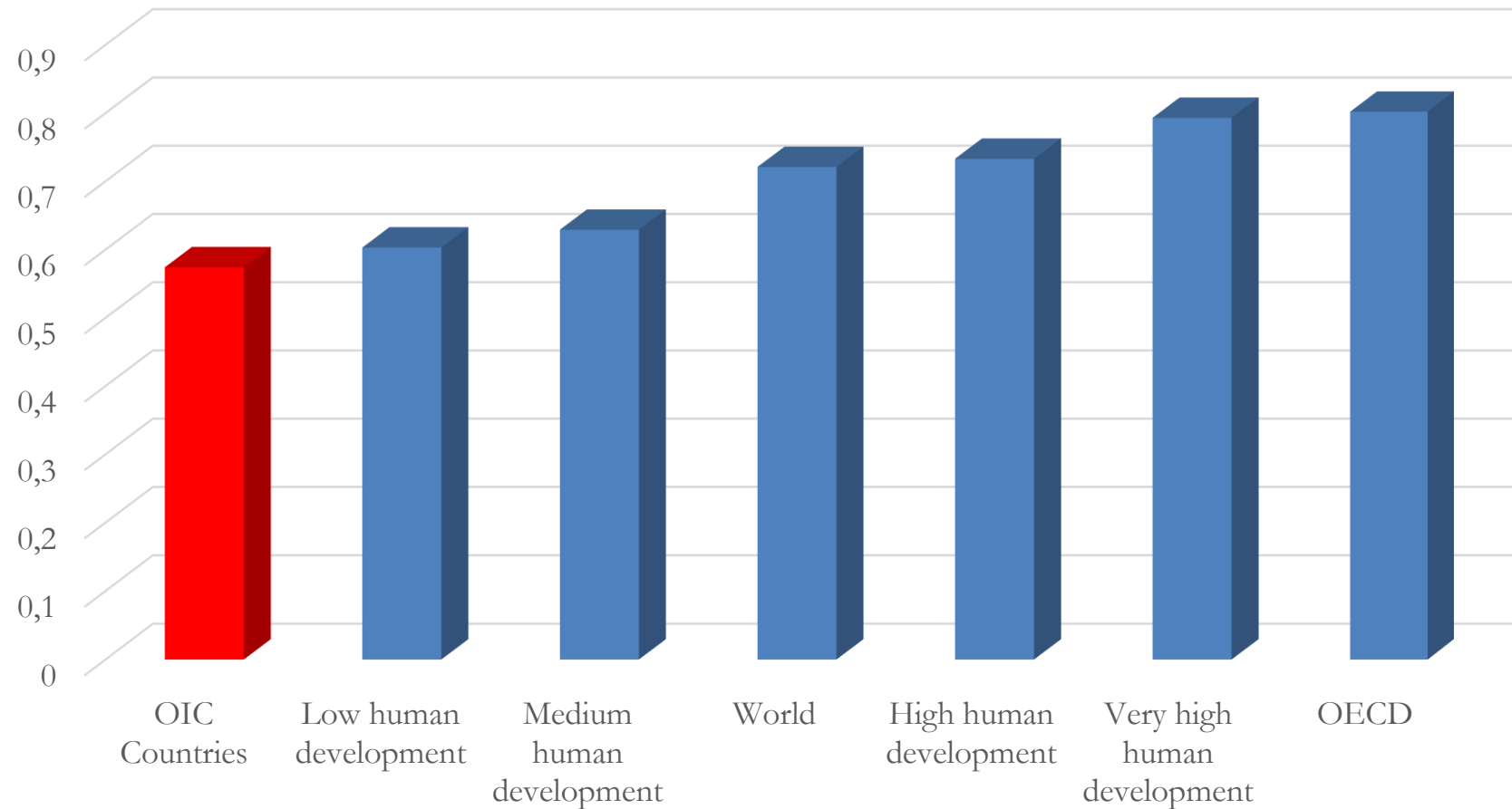
Labour and financial inclusion index

Participation in decisionmaking index

Global Gender Parity Index (GGPI)

```
graph TD; subgraph DIMENSIONS; D1[Life and good health]; D2[Education, skill-building and knowledge]; D3[Labour and financial inclusion]; D4[Participation in decisionmaking]; end; subgraph INDICATORS; I1[Fraction of life expectancy at birth spent in good health, female/male]; I2[Population with completed secondary education or higher, female/male]; I3[Youth not in education, employment or training, female/male]; I4[Labour force participation rate in households of couples with children, female/male]; I5[Financial account ownership, female/male]; I6[Share of seats held in parliament, female/male]; I7[Share of seats held in local government, female/male]; I8[Share of managerial positions held, female/male]; end; subgraph DIMENSION_INDEX; DI1[Life and good health index]; DI2[Education, skill-building and knowledge index]; DI3[Labour and financial inclusion index]; DI4[Participation in decisionmaking index]; end; I1 --> DI1; I2 --> DI2; I3 --> DI2; I4 --> DI3; I5 --> DI3; I6 --> DI4; I7 --> DI4; I8 --> DI4; DI1 --> GGPI[Global Gender Parity Index GGPI]; DI2 --> GGPI; DI3 --> GGPI; DI4 --> GGPI;
```

Global Gender Parity Index



Women Empowerment Index

DIMENSIONS

Life and good health

Education, skill-building and knowledge

Labour and financial inclusion

Participation in decisionmaking

Freedom from violence

INDICATORS

Modern methods of contraception

Adolescent birth rate

Female population with completed secondary education or higher

Female youth not in education, employment or training

Female labour force participation rate in households of couples with children

Female financial account ownership

Share of seats in parliament held by women

Share of seats in local government held by women

Share of managerial positions held by women

Intimate partner violence prevalence among ever-partnered women and girls

DIMENSION INDEX

Life and good health index

Education, skill-building and knowledge index

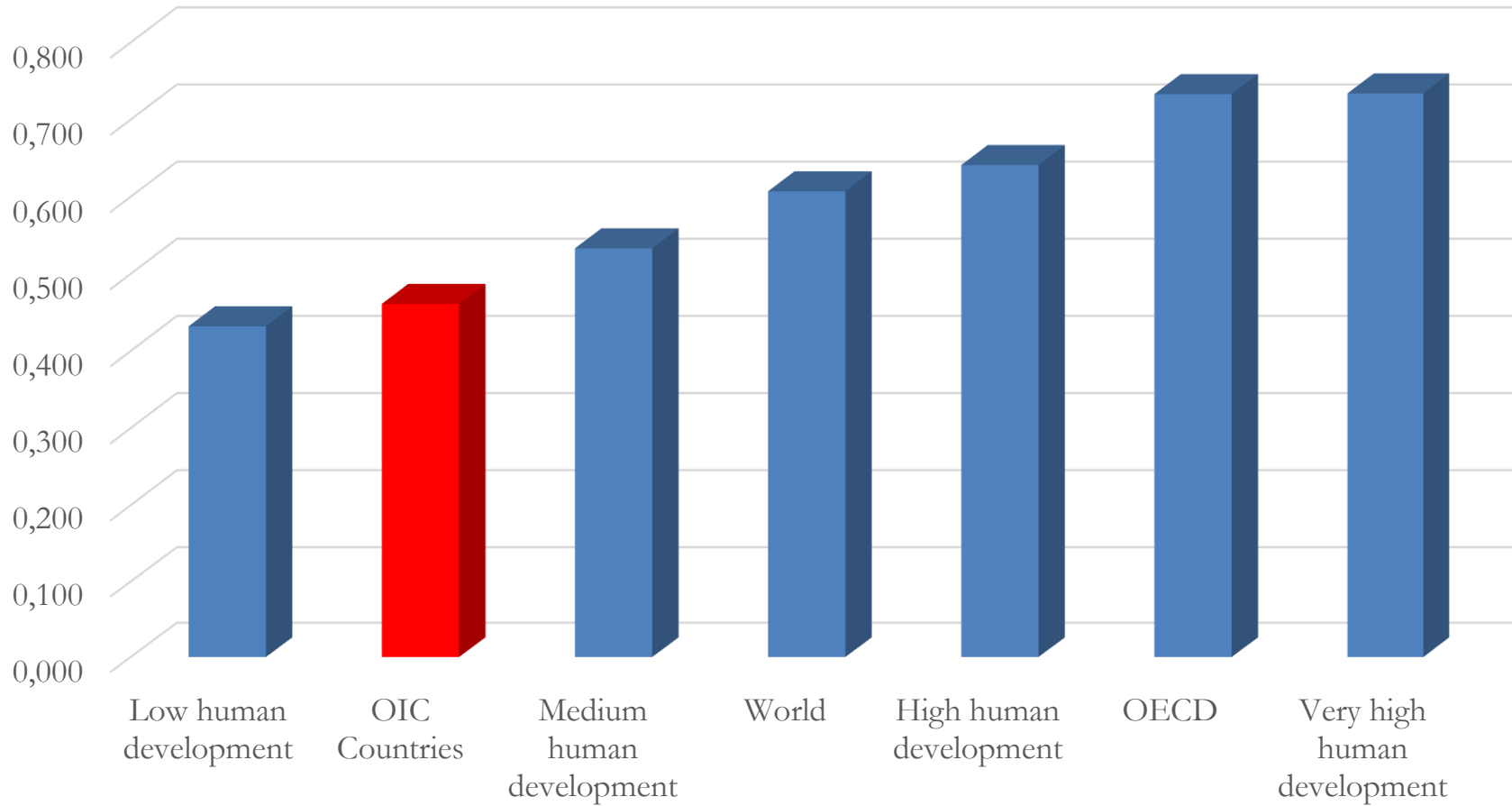
Labour and financial inclusion index

Participation in decisionmaking index

Freedom from violence index

Women's Empowerment Index (WEI)

Women Empowerment Index



Summary

- The OIC Member Countries **do not form a homogenous group** in terms of poverty.
- **22 out of 46 Least Developed Countries (LDCs)** are members of the OIC.
- Although developing countries have recorded **considerable improvements in monetary and non-monetary poverty alleviation** in the last decades, poverty rates are still high for a sizeable number of countries.
- There are approximately **400 million people** suffering from poverty in OIC Region.
- Achievements in poverty alleviation have been **adversely affected by the COVID-19**.
- Poverty alleviation is a **permanent agenda item and cooperation areas of the COMCEC**.
- Through the collaborative efforts and support of COMCEC, individual member states should continue working towards **sustainable development** that encompasses crucial aspects such as **health, education, a decent standard of living, the reduction of gender inequality, and the empowerment of women**.

Thank you for your attention...

Assoc. Prof. Belgi Turan
belgituran@etu.edu.tr